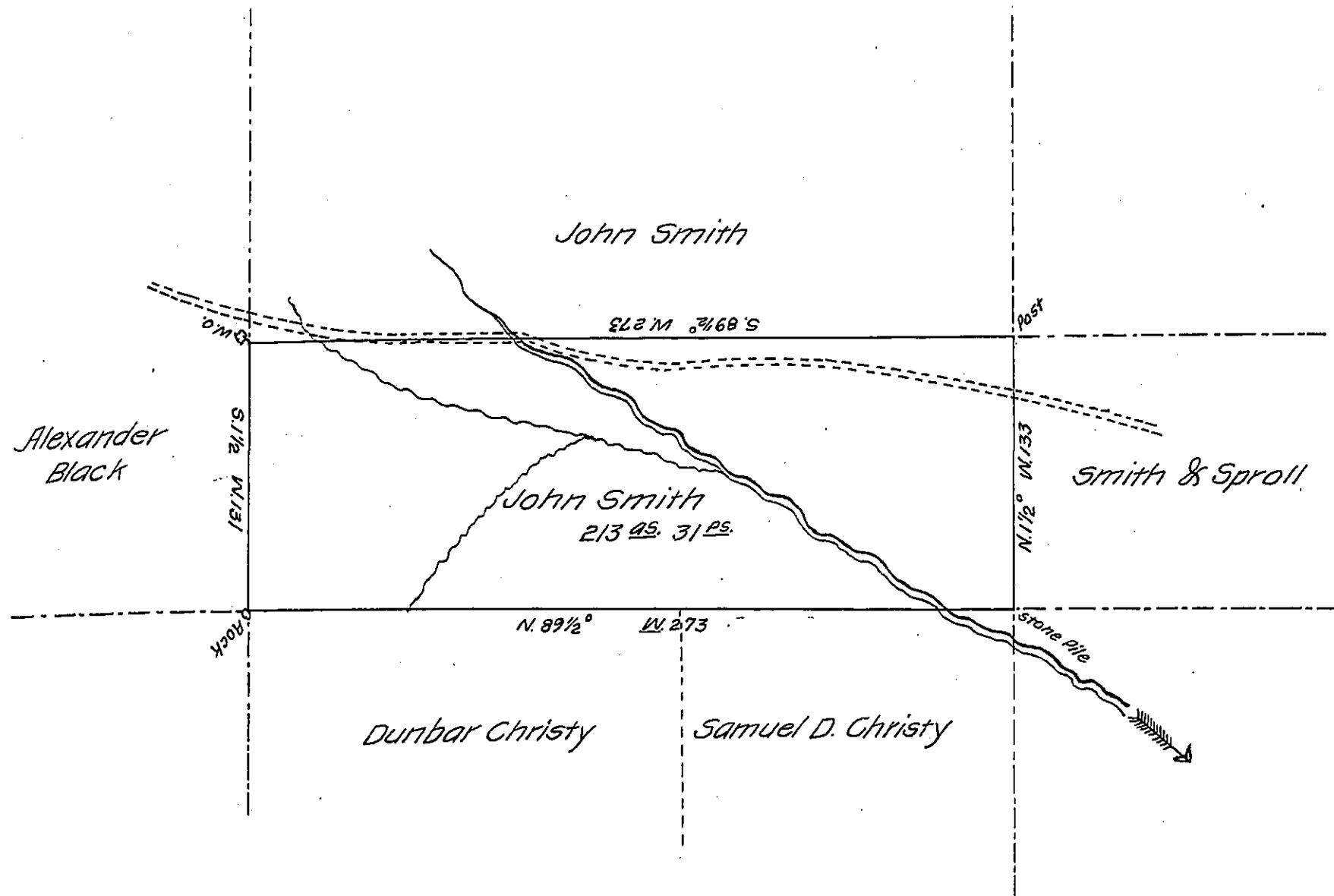


FORM NO 1.



Draft of a tract of land situated in Cherry Township, Butler Co.,
 (No. 261, in second donation district) containing 213 95. 31 ps. & the usual
 allowance of Six per Cent. Surveyed at the instance of John Smith by
 virtue of a warrent issued in the name of John Smith, from the land
 office dated July 24th 1863.

W. D. McCandless,

To the Hon. James P. Barr,

(County Surveyor.)

(Surveyor General)

IN TESTIMONY that the above is a copy of the original remaining on file in
 the Department of Internal Affairs of Pennsylvania, made
 conformably to an Act of Assembly approved the 16th day of
 February, 1833, I have hereunto set my Hand and caused
 the Seal of said Department to be affixed at Harrisburg,
 this third day of September, 1907.

Henry Howell
 Secretary of Internal Affairs.